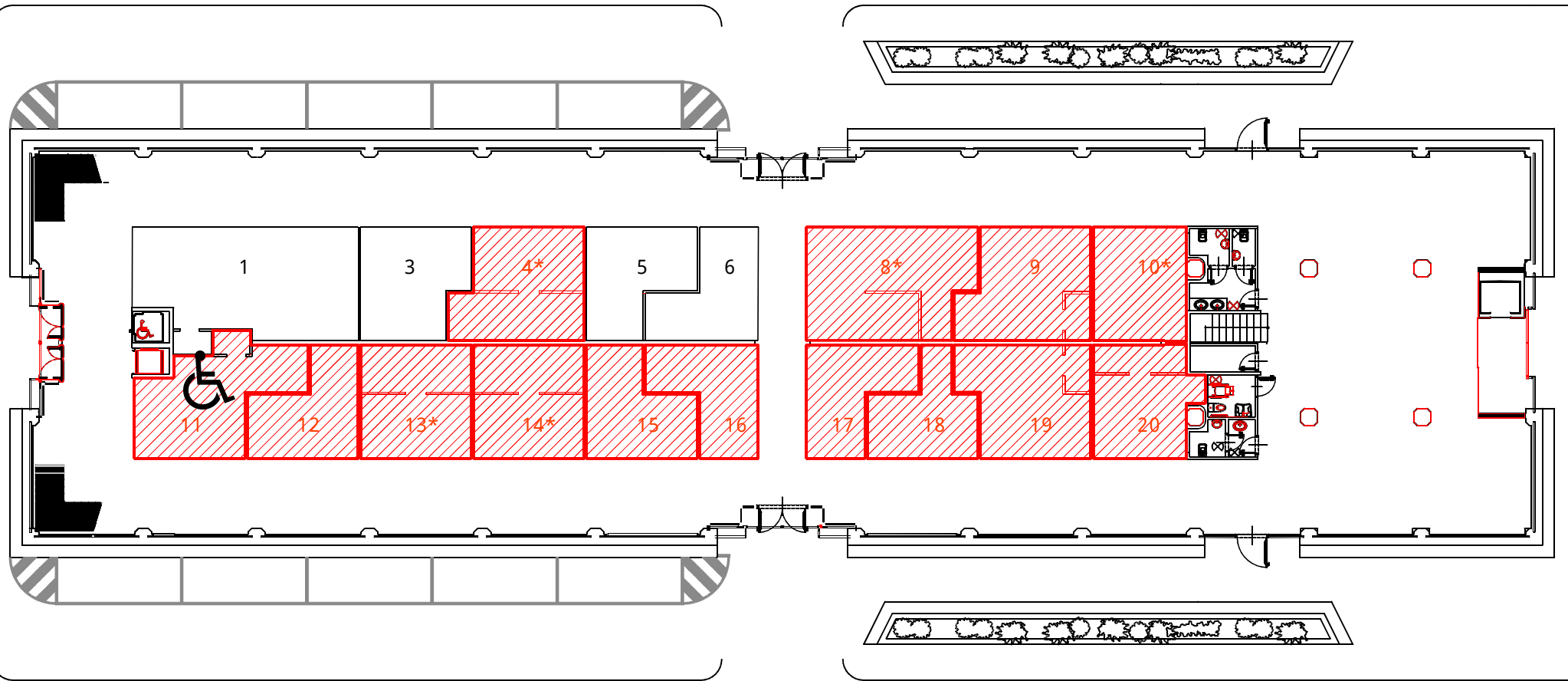


MERCATO FERRO  
(Scala 1:250)


VIA CARLO GOLDONI



VIA EMANUELE FERRO

Area totale in concessione 333.25 mq

box 4	mq	13.60 + 12.00 retro
box 8	mq	25.70 + 8.00 retro
box 9	mq	13.10 + 12.80 retro
box 10	mq	11.00 + 8.60 bagni + 1.20 rip + 7.00 retro + 15.20 area posa tavoli e sedie
box 11	mq	13.60 + 12.90 retro
box 12	mq	13.10 + 4.40 retro
box 13	mq	13.10 + 10.20 retro
box 14	mq	13.10 + 10.20 retro
box 15	mq	13.10 + 5.20 retro
box 16	mq	12.30 + 4.75 retro
box 17	mq	12.30 + 4.70 retro
box 18	mq	13.10 + 2.80 retro
box 19	mq	13.60 + 12.00 retro
box 20	mq	15.40 + 5.20 retro

 BOX LIBERI

